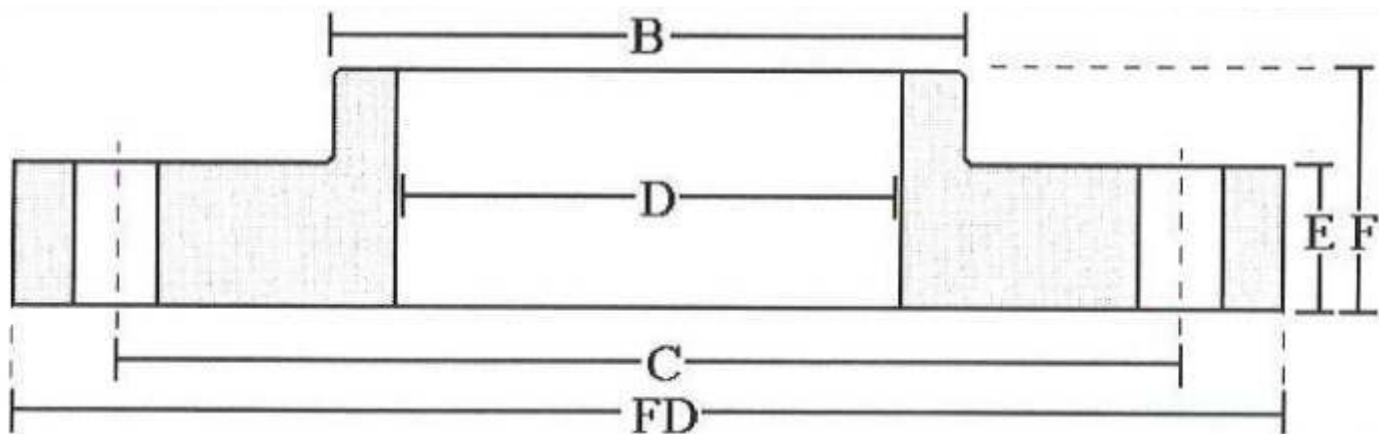


BRIDAS SANITARIAS



	D	B	C	FD	E	F	#	O
1	1.063	1 15/16	3 1/8	4 1/2	3/8	9/16	4	5/8
1 ½	1.563	2 9/16	3 7/8	5	3/8	5/8	4	5/8
2	2.061	3 1/16	4 3/4	6	7/16	3/4	4	3/4
2 ½	2.563	3 9/16	5 1/2	7	7/16	3/4	4	3/4
3	3.063	4 1/4	6	7 1/2	1/2	7/8	4	3/4
4	4.063	5 3/16	7 1/2	9	1/2	7/8	8	3/4
6	6.063	7 1/2	9 1/2	11	3/4	1	8	3/4